



C80 type Slim Line Refilling INSTRUCTIONS

Copyright © 1999-2009
MagicInkjetFlush.com All rights reserved.

C80
Dr.Epson
CLEANING CARTRIDGE
TRY NEW CHIP RE-SETTING PROGRAMME FOR EPSONS
[HTTP://WWW.SSCFG.COM/DOWNLOAD/SSCSERVE.EXE](http://www.sscfg.com/download/sscserve.exe)

Dr.Epson Refill Tool
REFILLS ANY EPSON INKJET

TEL-FAX: PORTUGAL ++(351) 273 332 832
APT 1133 - 5300 BRAGANÇA - PORTUGAL
NOTE: COPYING IN ANY FORM IS ILLEGAL

inkjet Kits Dr.Epson C80

TIP: Either PRINT JUST THIS PAGE or open this PDF file twice so you can follow text instructions found below.

PRINT HEAD CLEANING INSTRUCTIONS FOR EPSON [CLICK ON NEXT LINE](#)

http://www.magicinkjetflush.com/Ebay/Thank_you_after_ordering_Magic.htm#ln%20a%20Hurry

Dr.EpSON Refill Tool instructions. Please read all TEXT below before starting.

Instructions for **BROTHER printers can be found at the end.**

FREE [Chip Resetting](#) & Cleaning Program for Epson Cartridges...

Click Here to download <http://tinyurl.com/6cow8>





PLEASE NOTE! **If you have a C64-C84-CX6400?**
Please see picture on right.

Otherwise please continue below...

C80 Type of Cartridge Refilling method.

How IS IT DONE

Full instructions will start after this introduction (Where numbers start) This is just a summary to give you an idea of how it works.

Basically although everyone says it's impossible to refill Epson **slim line** cartridges. Filling the C80 type of cartridge could not be easier with the help of the **Dr.EpSUN Refill Tool** which we have used for more than 10 years.

Using our Unique filling method you can fill them in about 60 seconds! So instead of buying new inks just refill your own and reset the chips, can save a small fortune!

The **Dr.EpSUN Refill Tool** (large metal tipped syringe) allows removal of air from any Epson **slim line** type cartridge...
Thus creating a vacuum.

As the air is withdrawn you simply allow the **Dr.EpSUN Refill Tool** plunger to retract by itself and the cartridge will fill automatically. Continue process until all air is removed then it's full.

HOW WILL I KNOW IT IS FULL?

You will know it's full, once ink appears in the **Dr.EpSUN Refill Tool** instead of air! Then just seal the hole with sellotape (scotch tape). Try it's

Magic



HOW MANY TIMES CAN I REFILL THE SAME CARTRIDGE?

Using this method, your empty inkjet cartridge can be used over and over again!
(Remember you can use the **Dr.EpSUN Refill Tool** to refill ANY EPSON cartridge with ink or **Magic Inkjet Flush**)

Many customers tell us they love the simplicity of this tool, hope you do too!

Note: Remember don't try to force the fluid in!
Instead once air is removed let the plunger of the **Dr.EpSUN Refill Tool** retract naturally.

BASICS OF HOW TO FILL A C80 TYPE (Full details below)



- A.) Secure your Epson/Brother inkjet cartridge upside down into a vice or similar grip...
- B.) Fill **Dr.EpSUN Refill Tool** HALF FULL ONLY!!! (with ink or **Magic Inkjet Flush** if you wish to make a **Dr.EpSUN Refill Tool** cleaning cartridge.)
Then hold tip facing up place tissue over tip and gently eject trapped air.
(C80_Picture)
-
- C.) Peel back top seal of label (if yours has one) to view transparent seal underneath.
-
- D.) Then using metal tip of **Dr.EpSUN Refill Tool** pierce a tiny hole through the transparent cartridge seal (See picture) inserting point until black circular rubber makes a good seal...
-
- E.) Holding body of **Dr.EpSUN Refill Tool** in your left hand.
-
- F.) Gently Pull up the plunger with your right hand, you should see air bubbles escaping from cartridge through the liquid and into the top of the syringe!
-
- G.) Allow plunger to retract as it does it will fill cartridge!

It may sound difficult... but really it's not.

PRACTICE !

If you have a spare empty **slim line** cartridge?
Why not try our method using water instead of ink...
If you do wish to try? Fill a cartridge with distilled water then you can empty it

afterwards and still use the cartridge for your printer.
But if normal tap water is used instead for your test
DISCARD after test because... **TAP WATER WILL DAMAGE PRINT HEAD!!!**

SAVE THE CHIP!

Don't forget to KEEP THE CHIP before discarding...
Just in case you ever need to replace (transplant) a chip
Simply lever it off the 2 pegs with a penknife and save it!
They transplant easily.
Once you try it you will see how easy it is!

I DON'T HAVE ANY EMPTIES!!!

If you don't have original Epson empties???
No problem this is the TRICK! You can use compatibles, if so just fill from ink outlet
hole as they do not usually have a trap door type of seal.

If you only have original FULL inks? Empty them first and save the ink then use
them to clean the printer ! Then once your printer is unclogged you can easily refill
them with your saved ink and BINGO you are ready to print!

If not... buy yourself at least 1 New Epson Cartridge.
(Remember to buy an original Epson not a compatible!) Some compatible may also
work but you may not be able to reset/freeze the ink levels with chip reset prog.

Which color should I buy?

Choose a color which is clogged and needs unclogging.

Use copyright **Dr.EpSUN Refill Tool** instructions below to... empty the ink...
Save ink...in a spotlessly CLEAN jam jar or similar container...

Then refill it with **Magic Inkjet Flush** Print Head Cleaner
which is almost transparent so it does not matter which color cartridge you use it in
and often you can make just one universal cleaning cartridge.

So try using the same cartridge to clean all of the blocked colors 1 by 1 then
afterwards keep your universal cleaning cartridge ready for the next time! If it fits
in a different slot you may just need to transplant the chip from the correct color.
(Always mark the cartridges/chips before switching to avoid problems later.)

Here's How to empty a FULL ink cartridge...

Hold NEW FULL unused ink cartridge normal way up... Then hold **Dr.EpSUN Refill
Tool** under NEW cartridge and use metal tip to pierce the ink outlet hole/seal of
the cartridge. As you insert the metal tip you may feel a slight pressure as it opens
the trap door seal inside the neck.

Once the black rubber seal makes contact with the clear plastic you just perforated.
Pull back on plunger and the ink will empty into **Dr.EpSUN Refill Tool**.

Save ink in a clean sealed jar for refilling later.

Note: The ink outlet hole has a trap door type seal so it will not leak after
emptying!

Remember you CANNOT fill through this ink outlet hole!!!

Epson have created a circular emptying system (similar to a snail shell) which when empty back fills with trapped air, this prevents normal re-filling... hence we developed our copyright system about 10 years ago!

DON'T FORGET ! ONLY USE normal ink OUTLET IF EMPTYING A FULL CARTRIDGE!

Picture 1

If you bought our popular 100ml size of Magic Inkjet Flush... it is ready to use.

Otherwise

If your kit includes a concentrated **Magic Inkjet Flush** you will need to dilute it. Concentrated Magic is darker green in color, the color of Fairy Liquid.

Picture 2

Remove stopper and pour the concentrated Magic into a clean plastic cup or glass then add 3 x distilled water.

Example: A 30 ml bottle of concentrated Magic will make 120mls. So just add to 90mls of DISTILLED WATER. You may wish to keep some concentrate just in case you ever get a very stubborn clog... Try it neat is so.

NOW HALF FILL **Dr.EpSUN Refill Tool ONLY HALF FULL!!!**

Picture 3

Holding **Dr.EpSUN Refill Tool** upright... cover metal tip with a tissue and expel any trapped air... by pushing in the plunger, until liquid appears on tissue.

Picture 4

IMPORTANT!

Don't peel back the label! down the side of cartridge...

If this hole is open... IT WILL LEAK so you will have to throw it away!

Picture X

Place Cartridge into a vice or similar sandwiched between a tissue, incase of slight spillage, it also protects the fragile sides label from damage.

Don't try to fill from ink outlet hole! Does not work!

Picture 5

Gently peel up corner of blue top label with a sharp knife. Be careful *there are 2 SEALS!!! Only remove the top blue Epson label Leaving TRANSPARENT one underneath intact.

Picture 6

Using tweezers or similar... securely hold corner of blue label and peel it back slightly to reveal 2 circular holes...

Important! Leave clear transparent seal underneath label intact...

As already mentioned...

DO NOT peel blue label back down the side! (As in Pic. 29!!!) You only need to expose the 2 circular holes.

Picture 7

Leave left circle intact!

Picture 8

Insert metal tip of **Dr.EpSUN Refill Tool** through transparent seal. (centre hole)

Using **Dr.EpSUN Refill Tool** gently pierce the see thru plastic with metal tip.

Pictures 9/10

Insert metal tip until the black neoprene rubber makes a good seal around hole you just made.

Picture 11

Now we are going to fill by creating a vacuum ...

(So pull up the plunger and you should see air bubbles escaping from the cartridge into the **Dr.EpSUN Refill Tool**. Allow the plunger to retract and the liquid (ink - Magic... whichever you are using) will automatically be sucked back into the cartridge to replace the air!)

a) But remember before you start... the **Dr.EpSUN Refill Tool** = syringe should only be **half full!** to allow space for the removed air!

b) Don't try to inject the liquid into the cartridge, instead do the opposite and suck the trapped air inside the cartridge up into the REFILL TOOL using the plunger! Make sure the black rubber is in good contact to make an airtight seal.

c) Slowly pulling the plunger up... you will see air bubbles escaping from inside the cartridge up into the syringe.

Pictures 12/13

d) Don't push plunger... instead allow the plunger to retract by itself as it does so the cartridge will automatically start to fill by itself!

e) Continue the same procedure... removing air by pulling up the plunger & releasing the plunger until all the liquid in the syringe has been replaced by air.

Picture 14

If more liquid is required to fill your cartridge? no problem... You may remove metal tip, reload HALF FULL again and continue the same action... removing air then allowing the plunger to retract, whilst keeping a good seal around the black rubber.

Picture 15

Once colored liquid is withdrawn instead of air the cartridge is full!

(Escaping colored liquid will depend on which color you are filling)

Pictures 16/17

Allow plunger to retract then stop.

Pictures 18/19

Gently remove **Dr.EpSUN Refill Tool** cartridge, it should not leak.

Picture 20

Sellotape is now required to seal the hole you made... but first wipe off any spillage with a tissue and make sure it is clean and dry.

Picture 21

Then cover hole with Sellotape / Scotch tape

Picture 22

Press down tightly to seal it.

Picture 23/25

Cut off surplus tape

Picture 26/27/28

Cover with blue top seal.

How to use FREE Chip Reset and Cleaning Program for Epson Cartridges

Free Chip Resetting Program:



Finally the chip.

Click on link below to download your FREE Chip Resetting and Cleaning Program for Epson Cartridges.

Save on hard drive so it can be used anytime you need to reset an Epson Cartridge.

Chip Re-setter. <http://tinyurl.com/6cow8>

** - NOTE! It is impossible to reset ink counters by software methods on some Epson cartridges.

Therefore use the "ink freezer" function to maintain current ink levels and "hot swap" to use refilled old cartridges.

FAQ Questions:

1) I can't reset my Chip!

If you have a problem with a chip and it will not reset or accept ink freeze? (Ink Freeze tricks printer into thinking it still has ink) then transplant another chip.

Chip Re-setter. <http://tinyurl.com/6cow8> Choose Save to download to your computer.

How to use

Once installed... To launch program on WinXP connect your printer !

USE "RIGHT HAND MOUSE BUTTON" to click on the "SSC Service Utility ICON" found on bottom right of your monitor. (WIN XP)

By clicking on "RIGHT HAND MOUSE BUTTON" you will see all the possible options... Your printer/s should be recognized automatically and display all options available.

Epson Stylus Printers supported by SSC Service Utility Ver 4.10:

Main features.

SSC Service Utility allows you to do many amazing things with Your Epson printer:

- 1) Work directly with CSIC on Epson Stylus cartridges.
- 2) Freeze internal ink counters.
- 3) Reset internal ink counters even with empty cartridges.
- 4) Separate cleaning of color and black print head for all Epson inkjet printers, also has a powerful cleaning mode.
- 5) Hot swapping of cartridges supported.
- 6) Resetting of protection counter (even if it is full).
- 7) More than 160 different Epson printers are supported.

This allows many people with high printing demands to save some money (as the program works with both black and color cartridges).

To date this software works under Windows 95/98/ME/2K2/XP/Vista with both the LPT and USB printers but Mac is still not available therefore I would suggest you buy a cheap resetter which can now be easily be bought on Ebay, for just a few \$'s.

Supported printer models VER 4.10 **(16.10.2006)**

Printer Model

- Epson Stylus Color 400
- Epson Stylus Color 440
- Epson Stylus Color 480 LPT
- Epson Stylus Color 480SXU / 580
- Epson Stylus Color 600
- Epson Stylus Color 640
- Epson Stylus Color 660
- Epson Stylus Color 670
- Epson Stylus Color 680 / 777
- Epson Stylus Color 740
- Epson Stylus Color 760
- Epson Stylus Color 800 / 850
- Epson Stylus Color 860
- Epson Stylus Color 880
- Epson Stylus Color 900 / EM-900C
- Epson Stylus Color 980
- Epson Stylus Color 1160
- Epson Stylus Color 1520
- Epson Stylus Color 3000
- Epson Stylus C20 / C40 / CL-750
- Epson Stylus C41 / C42 / C43 / C44 / C45 / C46 / C47 / C48 **
- Epson Stylus C50
- Epson Stylus C60

- Epson Stylus C61 / C62 **
- Epson Stylus C63 / C64 **
- Epson Stylus C65 / C66 and PE **
- Epson Stylus C67 / C68 / D68 and PE **
- Epson Stylus C70 **
- Epson Stylus C80 **
- Epson Stylus C82 **
- Epson Stylus C83 / C84 **
- Epson Stylus C85 / C86 and PE **
- Epson Stylus C87 / C88 / D88 and PE **
- Epson Stylus Photo RX420 / RX425 / RX430 **
- Epson Stylus Photo RX500 / RX510**
- Epson Stylus Photo RX520 **
- Epson Stylus Photo RX600 / RX610 **
- Epson Stylus Photo RX620 **
- Epson Stylus Photo RX700 **
- Epson Stylus CX3100 / CX3200 **
- Epson Stylus CX3500 / CX3600 / CX3650 **
- Epson Stylus CX3700 **
- Epson Stylus CX3800 / CX3810 / DX3800 **
- Epson Stylus CX4500 **
- Epson Stylus CX4600 **
- Epson Stylus CX4100 / CX4200 **
- Epson Stylus CX4700 / CX4800 **
- Epson Stylus DX4200 / DX4800 **
- Epson Stylus CX5100 / CX5200 **
- Epson Stylus CX5300 / CX5400 **
- Epson Stylus CX6400 / CX6600 **
- Epson Stylus CX6300 / CX6500 **
- Epson Stylus CX7800 **
- Epson PictureMate
- Epson Stylus Photo
- Epson Stylus Photo EX
- Epson Stylus Photo 700 / IP-100
- Epson Stylus Photo 750 / PM-770C
- Epson Stylus Photo 780 / 790 / PM-780C
- Epson Stylus Photo 810 / 820
- Epson Stylus Photo 820 **
- Epson Stylus Photo 825 / 915
- Epson Stylus Photo 830 / 830U **
- Epson Stylus Photo 870 / PM-875DC
- Epson Stylus Photo R200 / R210 **
- Epson Stylus Photo R220 / R230 **
- Epson Stylus Photo R300 / R310 **
- Epson Stylus Photo R320 **
- Epson Stylus Photo R800 / PX-G900 **
- Epson Stylus Photo R1800 **
- Epson Stylus Photo R2400 **
- Epson Stylus Photo 890
- Epson Stylus Photo PM-890C
- Epson Stylus Photo PM-A700 **
- Epson Stylus Photo PM-G720 **
- Epson Stylus Photo PM-970C **
- Epson Stylus Photo 895/ 785EPX
- Epson Stylus Photo 900 **
- Epson Stylus Photo 925 / 935 **
- Epson Stylus Photo 950 / 960 / PM-950C **

- Epson Stylus Photo 1200 / PM-3000C
- Epson Stylus Photo 1270 / PM-3300C
- Epson Stylus Photo 1280 / PM-3500C
- Epson Stylus Photo 1290
- Epson Stylus Photo 2000P
- Epson Stylus Photo 2100 **
- Epson Stylus Photo 2200 / PM-4000EPX **
- Epson Stylus Pro 5000 / PM-5000C

** **NOTE!** It is impossible to reset ink counters by software methods on these printers.

Use "ink freezer" function to maintain current ink level and "hot swap" to use refilled old cartridges.

 Hope you like the FREE shareware program.

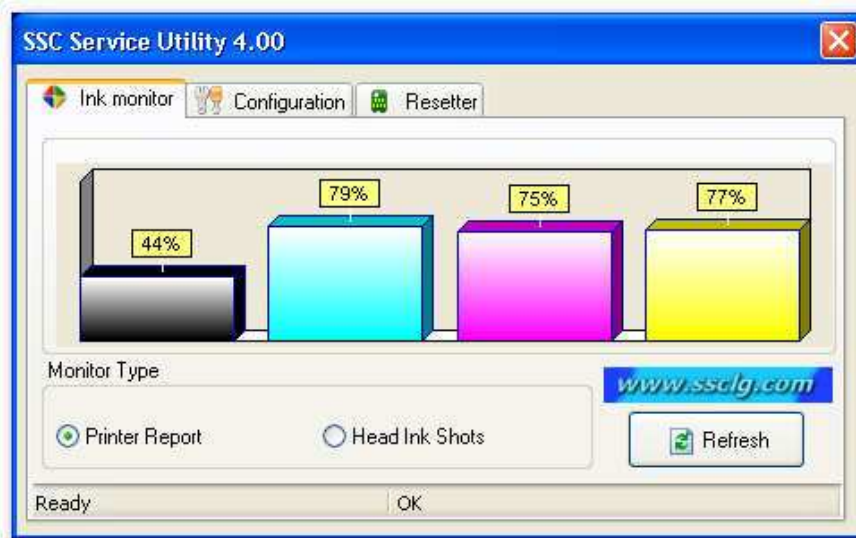
Click here to download.

<http://tinyurl.com/6cow8>

Send your test reports and support requests (with reports) to this e-mail
testrep@ssclg.com

You can discuss this software in the forum. <http://www.ssclg.com/cgi-bin/netboard/netboard.cgi?fid=268&cid=267&fct=gotoforum>

Program screen shots:



This menu can be accessed by right clicking on the application icon located in tray.



How to transplant an Epson Chip

1) It's easy to transplant Original Epson chips... Always mark first with a marker pen to identify color type... Then just lever the chip off the 2 pegs with a penknife and transplant. Use chip reset program to reset chip to 100% FULL.

PRINT TEST SHEETS FOR USE WITH MAGIC INKJET FLUSH

BLACK http://magicinkjetflush.com/Ebay/Print_Test_Black.jpg

COLOUR http://magicinkjetflush.com/Ebay/Print_Test_Color.jpg

CYAN http://magicinkjetflush.com/Ebay/Print_Test_Cyan.jpg

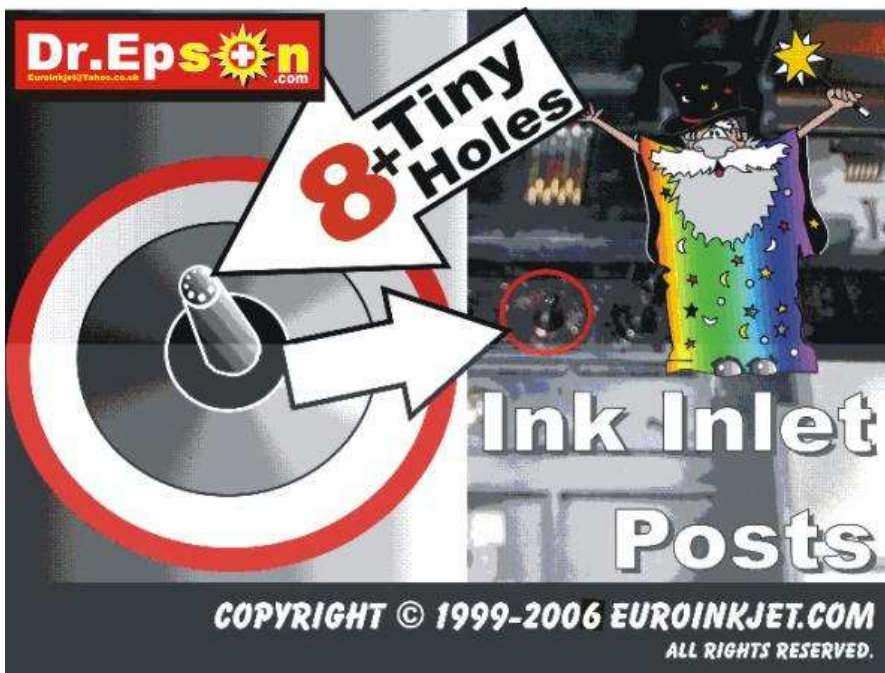
YELLOW http://magicinkjetflush.com/Ebay/Print_Test_Yellow.jpg

MAGENTA http://magicinkjetflush.com/Ebay/Print_Test_Magenta.jpg

GREY http://magicinkjetflush.com/Ebay/Print_Test_Grey_Tones.jpg



If your inks do run dry there is a possibility of an air lock occurring in the print head, then nothing prints, but if that happens no problem... Just use the **Magic Applicator** filled with **Magic Inkjet Flush** and gently force a little Magic through the ink inlet post, to remove the trapped air and flush the print head. Then replace the ink cartridge and print rectangles of that color, until prints appear normal.





RESET EMPTIES!!! & SAVE YOURSELF UP TO 38% ON NEW INKS!!!

When Epson chips tell you your inks are EMPTY !!! You may find that they are still about 38% FULL? [See Breaking News below](#) So why not reset them and get more for your money... Epson say you need the chips to register empty

to prevent the print head from drying out... but if true!!! What about the millions of cartridges they still sell which have never had chips???



Breaking News

Settlement in Epson Class-Action Suit Gets Initial Approval (5/3/2006)

If you bought an Epson inkjet printer in the U.S. during the past seven years you might be eligible for a \$45 credit with the company. **To read more click on following link**

<http://www.recharger.com/news.asp?id=200605502>

To read more or check if you are eligible to be part of settlement class visit www.epsonsettlement.com.

2) Do I need to make a **Dr.EpSUN Refill Tool** for each color I want to unclog? No, but as the chips maybe different on each cartridge? you may need to trick the printer into thinking the cartridge is the correct color... for that slot. Therefore, if you wish to make a universal **Dr.EpSUN Refill Tool** cleaning cartridge which will fit any slot you may need to switch over the chips. (transplant) Just swap the chips from any original Epson of the same color.

3) If you have made a cyan (blue) cleaning cartridge but now you need to unblock for example the Yellow... Use a penknife to lever the chip off an original Yellow cartridge and transplant it.

4) Can I use the same **Dr.EpSUN Refill Tool** filling method to refill my ink cartridges with ink? Yes... We can supply you with any quantity of waterproof pigmented inks and they are specially formulated to look and print the same as your original OEMs... Our inks are waterproof so they are great for external use. Please see below for details... We ship worldwide.

Black or Color C80 type Refill Inks for refilling your own slimline Epson Inks



Quality Pigmented inks: Example T0454 original Epson Cartridge has 8mls of ink. (For C64/c84 series/cx6400 printer) Therefore our 60ml refill ink will refill this cartridge 7.5 Times!!! Plus SAVE upto **SAVE upto 38%** by resetting the chips!

ASK ABOUT OUR REFILL KITs and save yourself a small fortune!

All 8 Pigmented colors are available from us:

Black, Cyan, Magenta, Yellow, Orange, Green,
Light cyan and Light Magenta.

Size	Cost	#Refills	(Example Epson color T0454 @ 8ml)
3 X 20ml	3 Colors \$9.99	7 Times @ 8ml	(Yellow Cyan Magenta)
2 X 30ml	Black \$9.99	4.6 Times @ 13ml	Black

BULK SIZE INK Black or ANY Color

Size	Cost	#Refills (Example Epson color T0454 @ 8ml)
60ml	\$9.99	7 Times @ 8ml color
120ml	\$19.98	15 Times
250ml	\$29.99	31 Times
500ml	\$49.99	62 Times
1,000ml	\$69.99	125 Times

Other Refill kits are available from us for any inkjet cartridge
Also Food Inks for printing pictures on cakes.



please ask for any requirement.

Important:

Please don't forget before leaving FEEDBACK...

If you have any queries, or if you just need further help or
assistance regarding using any of our products...

Please feel free to contact us at anytime...

Email: Euroinkjet@yahoo.co.uk

Remember we are only an email away!

We are always happy to hear from you.

Many thanks...

Please let us know how you get on...

Kindest Regards for now.

[John P Bradley](#) Follow me on Twitter... <http://twitter.com/JohnPBradley>



I'm a member of a private money making society online.. Want to join me?

<http://www.maverickmoneymakers.com/?hop=tinteiros>

Customer Service Dept.

Regards from all the team at www.MagicInkjetFlush.com

BROTHER inkjet cartridges ONLY

The **Dr.EpSUN Refill Tool** can also be used to refill some **BROTHER** inkjet cartridges using the Epson C80 method as described above. But if you don't have a **Dr.EpSUN Refill Tool** try using the **Magic Applicator** instead please see below.



Unclogging Brother Printers

Although it is possible to take the Brother printers apart, usually it is too difficult for most people.

To view what's inside a Brother Printer click on next line...

Click again to enlarge photo.

http://magicinkjetflush.com/images/Unclog_Refill_Brother_Printers.jpg

Therefore, what we suggest is to make cleaning cartridges using the **Dr.EpSUN Refill Tool** . Then use them to flush the print head (The print head is usually at the end of long tubes near to the back of the Brother printer)

*NEVER TOUCH THE WHITE star shaped PIN... under ink cartridges... once pressed in... IT WILL NOT RETRACT !

Also in most cases a single cleaning cartridge for black and 1 for colour is all you will need.

If you only have FULL INKS and need to make a cleaning cartridge use **Dr.EpSUN Refill Tool** to empty ink cartridges first, then save ink in a clean glass jar. Then make a cleaning cartridge, once unclogged simply use the **Dr.EpSUN Refill Tool** to refill with your saved ink.

How to make **BROTHER** Inkjet Cleaning Cartridges

If you wish to see photos? Follow the procedure for Epson C80 in the photos at the top.

Using FREE **Dr.EpSUN Refill Tool** .

To refill Brother inks... or if printer has been left unused and you need to unclog print head? To make a cleaning cartridges *Fill empties with Magic Inkjet Flush instead of Ink. Then print rectangles using Magic to FLUSH print heads, once prints appear lighter in colour but without white lines, simply replace with inks and continue printing rectangles until all Magic has been flushed out of print head.

How to refill **BROTHER** empties...

1. Secure empty Brother ink cartridge UPSIDE DOWN in a vice or similar.
2. ONLY HALF fill **Dr.EpSUN Refill Tool** with warm Magic Inkjet Flush (or correct color Ink if refilling with ink)
3. Then Holding **Dr.EpSUN Refill Tool** upright... cover metal tip with a tissue and expel any trapped air until ink appears.
4. Insert metal tip into circular ink outlet hole of upturned cartridge until black rubber makes a **GOOD seal**. REMEMBER *NEVER TOUCH THE WHITE star shaped PIN... under ink cartridge... once pressed in... IT WILL NOT RETRACT !

Holding both securely...

5. Instead of trying to fill... Pull up on the plunger of **Dr.EpSUN Refill Tool** .
6. Air will bubble up through the Magic/ink whilst escaping from cartridge.
7. Now... Simply allow plunger to retract and Magic/ink will automatically refill the cartridge for you.

STOP before empty otherwise air will enter !!! Repeat until ink cartridge is full.

How to FLUSH a BROTHER print head.

8. Place filled cartridge into printer and you are ready to print.

Use print head cleaning to prime which will also fill the ink tubes... then....

9. Print rectangles of the problem colour(s) using test sheets (see below) to prime ink.

PRINT TEST SHEETS - FOR USE WITH MAGIC INKJET FLUSH

BLACK http://magicinkjetflush.com/Ebay/Print_Test_Black.jpg

COLOUR http://magicinkjetflush.com/Ebay/Print_Test_Color.jpg

CYAN http://magicinkjetflush.com/Ebay/Print_Test_Cyan.jpg

YELLOW http://magicinkjetflush.com/Ebay/Print_Test_Yellow.jpg

MAGENTA http://magicinkjetflush.com/Ebay/Print_Test_Magenta.jpg

GREY http://magicinkjetflush.com/Ebay/Print_Test_Grey_Tones.jpg

Once prints appear to be normal simply replace the Magic with ink cartridges and continue printing rectangles until flushed.

If you have any queries please just ask.

[John P Bradley](http://twitter.com/JohnPBradley) Follow me on Twitter... <http://twitter.com/JohnPBradley>

Customer Service Dept.

Regards from all the team at www.MagicInkjetFlush.com

Email: Euroinkjet@yahoo.co.uk



I'm a member of a private money making society online. Want to join me?

<http://www.maverickmoneymakers.com/?hop=tinteiros>



Other Links

MAGIC INSTRUCTIONS <http://tinyurl.com/6runb7>

PRINT HEAD CLEANING INSTRUCTIONS FOR EPSON **CLICK ON NEXT LINE**

http://www.magicinkjetflush.com/Ebay/Thank_you_after_ordering_Magic.htm#In%20a%20Hurry

Waste counter reset

http://www.magicinkjetflush.com/Ebay/Thank_you_after_ordering_Magic.htm#Epson_Cap_Ass_embly



<http://stores.ebay.com/Dr-EpSUN-Magic-Inkjet-Flush-Store?refid=store>



Dr.EpSUN Refill Tool (pat. pend.) & C80slim line type Refilling Instructions are Copyright © 1999-2009 www.MagicInkjetFlush.com (All rights Reserved)